



**ELEVATOR CAB**  
INTERIOR COMPANY



ELEVATOR CAB  
**INTERIORS**  
from Essential to Luxury



At LWI Elevator Cab Interior Company, we see our customers as true partners. Your goals guide our work, and our commitment remains the same: exceptional service and elevator interiors that exceed expectations. With more than 20 years of experience and hundreds of thousands panels produced, our foundation of craftsmanship and reliability runs deep.

As our offerings have expanded, we've refined how we present them. To make selecting the right interior clearer, we've created four simple elevator cab groups—CoreCab, Signature, Premier, and Luxury—featuring the same nine models you know. Each now carries a new name inspired by the spirit of America's heartland, with former names noted for a smooth transition.

We continue to offer a wide range of high-quality materials, including laminates, metals, veneers, stone, glass, textures, and patterns. And if you need something unique, we'll source it. From standard models to fully custom creations, our team is ready to bring your vision to life.

A quick reminder: we're often asked whether our ceiling panels, lighting, handrails, and bumpers can be purchased separately. They can. Give us a call for a quote.



**ELEVATOR CAB**  
INTERIOR COMPANY

# TABLE OF CONTENTS

About LWI	04
What We Offer	06
Top Laminates & Trends	08
Working with us	08

## Our Four Cab Solutions

- \$ CoreCab — Essential, Durable, Efficient
- \$2 Signature — Refined, Balanced, Versatile
- \$\$\$ Premier — Design, Atmosphere, Mood
- \$\$\$\$ Luxury — Exquisite, Emotion, Impact

## Our Gallery

### Details & Options

Handrail Options	52
Bumper Rails Options	52
Ceilings Styles & Lighting	50

### Resouces & More

Fire Ratings	54
Codes & Specs	55

AT LWI,  
**WE ARE**



### ECONOMICAL & PRACTICAL



Our elevator interiors are designed with long-term value in mind. Every cab can be personalized today and easily refreshed tomorrow. Swap out one, two, or several panels to update colors, materials, or design direction — without replacing the entire interior.

### FLEXIBLE & VERSATILE



Our signature template system makes future updates simple. If a panel is damaged or vandalized, replacement is quick and precise. Minimal measuring is required: match the number on the template to the number on the panel, hang it, and you're done.

The permanent template attaches directly to the cab shell with all reveals and clips pre-applied, ensuring consistent alignment and a clean, professional finish every time.

### HIGH QUALITY & SAFETY



Our elevator interiors are designed with long-term value in mind. Every cab can be personalized today and easily refreshed tomorrow. Swap out one, two, or several panels to update colors, materials, or design direction — without replacing the entire interior.



# WE OFFER



## LIGHTWEIGHT PANELS

A durable aluminum honeycomb core reduces weight without sacrificing strength. Available in nearly all laminates and veneers we offer.



## SUSTAINABILITY

Material options include low-emission substrates, recyclable components, and finishes that support LEED-aligned projects.



## CODE COMPLIANCE

Panels and components meet E84 fire testing, elevator code requirements, and industry safety standards.



## MATERIALS

Choose from laminates, metals, veneers, stone, glass, and specialty finishes — or let us source something unique for your project.



## TRUFIT EZ-TEMPLATE

Our pre-applied template ensures fast installation, perfect alignment, and effortless future panel replacement.



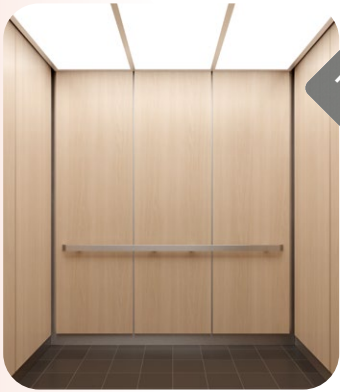
## RENDERINGS

Preview your design with professional renderings that help you finalize materials, colors, and layout before production begins.

# OUR MODELS

<https://lwielevator.com/cab-builder/>

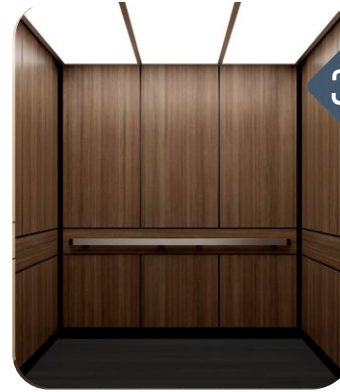
**\$1 CORECAB** — Essential, Durable, Efficient



RENAISSANCE | Harmony



EXCLAMATION | Vista



EXECUTIVE | Elevate



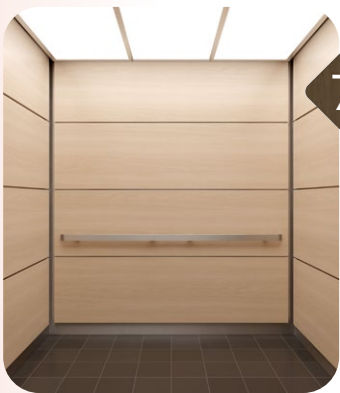
MAJESTIC | Momentum



LEGEND | Drift



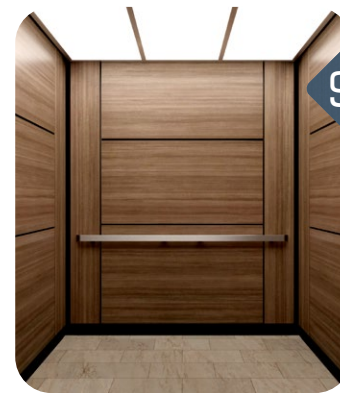
MATRIX | Echo



PINNACLE | Lumina



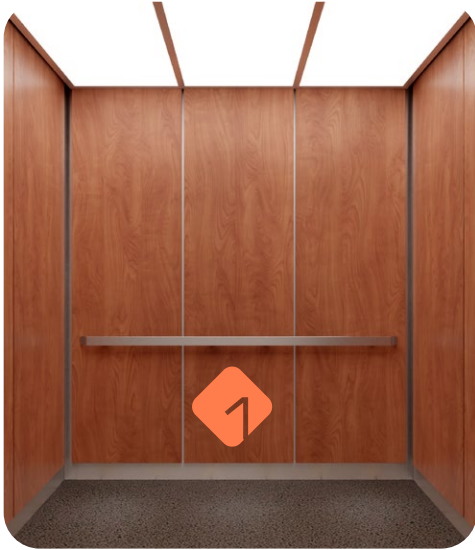
VERTICAL HORIZON | Aura



TRENDS | Highlights



EXCELLENCE – MADE SIMPLE



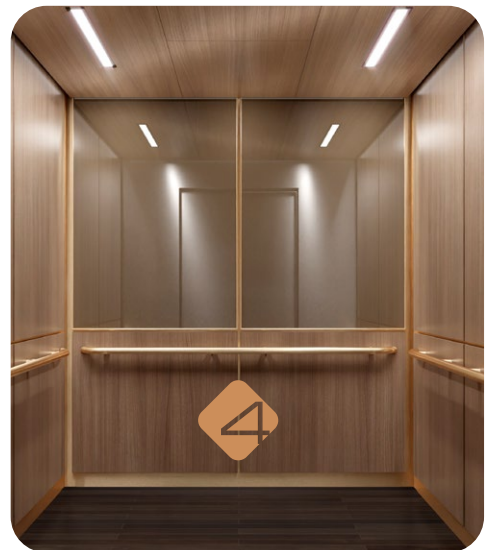
**\$<sup>1</sup> CORECAB**  
— Essential, Durable, Efficient



**\$<sup>2</sup> SIGNATURE**  
— Refined, Balanced, Versatile



**\$<sup>3</sup> PREMIER**  
— Design, Atmosphere, Mood



**\$<sup>4</sup> LUXURY**  
— Exquisite, Emotion, Impact

# ELEVATOR INTERIORS MADE SIMPLE.

0

GET STARTED.  
with your seamless 8-Step Journey

EXPLORE.

1

Check out the possibilities, materials, styles, and budgeting options that fit your vision.

Use our **LWI Cab-Builder Pro™** online design tool — or work directly with our creative specialists to shape your concept.

2

DESIGN.

ASSESS & DISCUSS.

3

Together, we review your selections together, refine details, and ensure everything aligns with your goals.

Our team works with the service contractor to take precise measurements to ensuring a perfect fit.

4

MEASURE & FINE-TUNE.

FINALIZE & QUOTE.

5

We prepare your finalized design package and provide a clear, detailed quote with no surprises.

Once approved, fabrication begins — built with precision, consistency, and quality.

6

APPROVE & ORDER

DELIVERY &  
INSTALLATION.

7

Our Template system is designed to speed up installation and minimizing downtime.



GOING UP OR DOWN...

8

Step into your refreshed cab and enjoy the ride.

# TruFit EZ-Template™

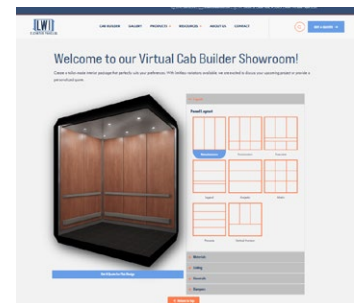


## A SMARTER WAY TO INSTALL

Did you know we've simplified the installation process?

Our TruFit EZ-Template™ System is engineered to save time — and save you money.

Scan the QR code to watch quick, step-by-step installation videos and see how effortless the process can be.



### TAILOR-MADE & TOP QUALITY

Every project is unique. With limitless variations available, we're here to help you create an interior that fits your vision, your building, and your budget. No matter your industry or scope, **LWI Cab-Builder Pro™** ensures a clean, consistent, professional finish every time.


Start here: [<https://lwielelevator.com/cab-builder-pro/>]


### PREMIUM MATERIALS YOU CAN TRUST

Choose from premier laminates, metals, solids, and patterns sourced from the brands you know and rely on. High-quality materials paired with the **TruFit EZ-Template™** system deliver durability, longevity, and a refined aesthetic.

### LET'S BUILD YOUR CUSTOM PACKAGE

Connect with our sales team to explore options, request samples, or receive a personalized quote. We're ready to help you create an interior package perfectly suited to your needs.

 C 319-830-9126 & P 319-266-6598

 [sales@lwiweb.com](mailto:sales@lwiweb.com) | [www.lwielelevator.com](http://www.lwielelevator.com)

 1911 Lincoln Street, Cedar Falls, Iowa 50613

# DESIGN & COLOR TRENDS

laminates, metals, solids, and patterns — sourced from the brands you know and trust.

## PRICE CATEGORY

-  \$<sup>1</sup> CoreCab  
Renaissance/Harmony  
Majestic/Momentum  
Pinnacle/Lumina
-  \$<sup>2</sup> Signature
-  \$<sup>3</sup> Premier
-  \$<sup>4</sup> Luxury

## MODELS

Renaissance | Harmony  
Exclamation | Vista  
Executive | Elevate  
Legend | Drift  
Majestic | Momentum  
Matrix | Echo  
Pinnacle | Lumina  
Vertical Horizon | Aura  
Trending Designs &  
Interiors Highlights

## PANELS & MATERIALS

Laminates  
Wood grain  
Patterned Designs  
Stone  
Metal  
Glass & Mirrored  
and more...

## DETAILS

Ceiling  
Handrails  
Bumpers  
flashing  
and more...

Columbian Walnut  
7943

Calcutta Marble  
4925

Walnut PB Cognac  
8279

Astro Strandz  
4940

Bronze Legacy  
4656

White Oak PB Wheaton  
8282

Pewter Brush  
4779

Port  
D14

Brittany Blue  
D321

Designer White  
15512

Black  
1595



Explore our curated CoreCab interiors and use them as a starting point for your own design. Each layout showcases a complete, ready-to-spec cab that you can customize to fit your project's style, budget, and performance needs. Simply choose the design that inspires you, scan its unique QR code, and open it directly in our online Cab-Builder. From there, adjust materials, lighting, handrails, and ceiling panels to create a configuration that's uniquely yours. Build with confidence using our flexible, fully customizable elevator cab packages.

Build with confidence using our flexible, high-quality elevator cab packages designed to elevate any space.

Our new catalog will guide you through each design option and—when a unique QR code is available—it will take you directly to that specific layout in our LWI Cab Builder Pro. Once opened, you can modify and customize the design to fit your project's needs. Choose the design that inspires you, scan the QR code if provided, and instantly open the layout in our LWI Cab Builder Pro to tailor every detail—materials, lighting, handrails, ceiling panels, and more—creating a configuration that's uniquely yours.

### COMING SOON

We'll also highlight the companies we've proudly worked with, along with our trusted network of high-quality suppliers and design laminate and covering partners. More to come soon.

Connect & follow us for updates, trends, and new finishes.



# QUALITY MATERIALS BEGIN WITH OUR SUPPLIERS





# \$<sup>1</sup> CORECAB — ESSENTIAL, DURABLE, EFFICIENT

**CoreCab** is the essence of practical design. Built for reliability and everyday performance, it delivers a smooth, dependable ride without unnecessary embellishment. Clean finishes, smart material choices, and streamlined installation keep projects moving, while its durable construction ensures long-lasting value. Ideal for everyday environments and budget-minded builds, CoreCab offers effortless functionality where it matters most.

## STEP INTO SIMPLICITY.

Renaissance | Harmony **(Our Bestseller!)**

Formerly Renaissance, now Harmony. Our most popular interior, this design reflects timeless balance and understated refinement. Known for its warmth and enduring appeal, it remains a customer favorite. With its new name, Harmony continues to offer the same trusted comfort — now supported by a richer story rooted in tradition and modern innovation.

MAJESTIC | Momentum

Momentum brings a sense of forward motion to the CoreCab lineup, pairing clean lines with a confident, modern aesthetic. Designed for projects that want a touch of sophistication without sacrificing practicality, this interior feels purposeful and composed. With its subtle visual energy and dependable materials, Momentum elevates everyday travel while staying true to CoreCab's promise of durability and efficiency.

PINNACLE | Lumina

Lumina captures the essence of clarity and brightness, offering a fresh, uplifting interior that feels open and inviting. Its refined simplicity highlights the quality of CoreCab craftsmanship, creating a space that feels both polished and approachable. Ideal for environments seeking a light, contemporary look, Lumina delivers a crisp, modern presence that enhances the ride experience without unnecessary complexity.

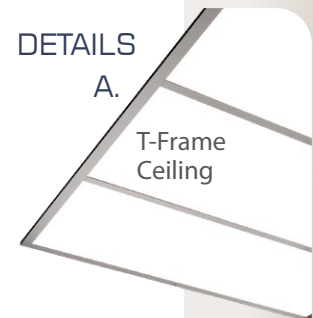
### Bring your vision to life!

We've simplified installation with our **TruFit EZ-Template™ System** — engineered to save time and save you money.

Like this design but want to customize it? Scan the QR code on the layout you prefer to jump straight into that cab's configuration.

Explore fully customizable cab packages with a wide selection of materials, lighting, handrails, and ceiling panels — all designed for comfort, style, and functionality.

Scan the QR code to explore our online **LWI Cab-Builder Pro™** and begin crafting your personalized 3D elevator design today at <https://lwielevator.com/cab-builder/>



\$ CoreCab  
Renaissance — Harmony

1

- Wilsonart: Beigewood [7850-60] Laminate Panels
- Brushed Stainless Reveal Package
- Classic T-Frame Ceiling with Lexan Diffusers
- 2 in. x 3/8 in. Flatbar Handrail Brushed Stainless with Straight Ends



RENAISSANCE | Harmony



MAJESTIC | Momentum



PINNACLE | Lumina

\$<sup>1</sup> CoreCab

## Renaissance — Harmony

- Wilsonart: Sterling Ash [7995-38] Laminate Panels
- Brushed Stainless Reveal Package
- Classic T-Frame Ceiling with Lexan Diffusers
- 2 in. x 3/8 in. Flatbar Handrail Brushed Stainless with Bent Ends

A.

Wilsonart:  
Sterling Ash

1

\$<sup>1</sup> CORECAB — OPTIONS 1 & 2

Cab interior configuration ideas



\$<sup>1</sup> CoreCab  
**Majestic — Momentum**

- **Wilsonart: Shadow [D96-60 Laminate Panels**
- **Black Painted Aluminum Reveal Package**
- **Classic T-Frame Ceiling with Lexan Diffusers**
- **2 in. x 3/8 in. Flatbar Handrail Brushed Stainless with Bent Ends**

A.

Wilsonart:  
Shadow

**Like one of these cabs?** Scan the QR code beneath your favorite to open it in our Cab-Builder and make it your own. Adjust materials, lighting, and details to create the interior that fits your project perfectly.





**\$<sup>1</sup> CoreCab  
Renaissance — Harmony**

- **Wilsonart: Wild Cherry [7054-60] Laminate Panels**
- **Brushed Stainless Reveal Package**
- **Classic T-Frame Ceiling with Lexan Diffusers**
- **2 in. x 3/8 in. Flatbar Handrail Brushed Stainless with Straight Ends**

A.

Wilsonart:  
Wild Cherry

1

**\$<sup>1</sup> CORECAB — OPTION 3 & 4**

Cab interior configuration ideas



**\$<sup>1</sup> CoreCab  
Pinnacle — Lumina**

- **Wilsonart: Caffelle [7933-60]  
Laminate Panels**
- **Brushed Stainless Reveal Package**
- **Classic T-Frame Ceiling with  
Lexan Diffusers**
- **2 in. x 3/8 in. Flatbar Handrail  
Brushed Stainless with Bent Ends**

A.

**Wilsonart:  
Caffelle**

**Like one of these cabs?** Scan the QR code beneath your favorite to open it in our Cab-Builder and make it your own. Adjust materials, lighting, and details to create the interior that fits your project perfectly.





\$<sup>1</sup> CoreCab  
**Renaissance — Harmony**

- Brushed Stainless Panels
- Brushed Stainless Reveal Package
- Classic T-Frame Ceiling with Lexan Diffusers
- 2 in. x 3/8 in. Flatbar Handrail Brushed Stainless with Bent Ends

A.

Brushed Stainless

1

\$<sup>1</sup> CORECAB — OPTION 5 & 6

Cab interior configuration ideas



**\$<sup>1</sup> CoreCab  
Pinnacle — Lumina**

- **Wilsonart: Graphite Nebula [4623-60] Laminate Panels**
- **Brushed Stainless Reveal Package**
- **Classic T-Frame Ceiling with Lexan Diffusers**
- **2 in. x 3/8 in. Flatbar Handrail Brushed Stainless with Bent Ends**

A.

**Wilsonart:  
Graphite Nebula**

**Like one of these cabs?** Scan the QR code beneath your favorite to open it in our Cab-BUILDER and make it your own. Adjust materials, lighting, and details to create the interior that fits your project perfectly.



## \$<sup>2</sup> SIGNATURE — REFINED, BALANCED, VERSATILE

Signature interiors bring warmth, balance, and familiar comfort to every ascent. Thoughtful material combinations and timeless design create a polished, welcoming environment that feels both dependable and refined. Ideal for projects seeking elevated style without entering Premier territory, Signature delivers long-lasting appeal rooted in tradition and trust.

A.

Wilsonart:  
Beigewood

### Bring your vision to life!

Like a design you see but want to customize it—start by scanning the QR code at the bottom of the layout you prefer. You'll jump directly into that cab's configuration and can tailor every detail from there. Explore your ideal interior with our fully customizable elevator cab packages, and connect with a sales representative to bring your vision to life.

Customize your elevator interior with a wide selection of materials, lighting, handrails, and ceiling panels — all designed to deliver superior comfort, style, and functionality.

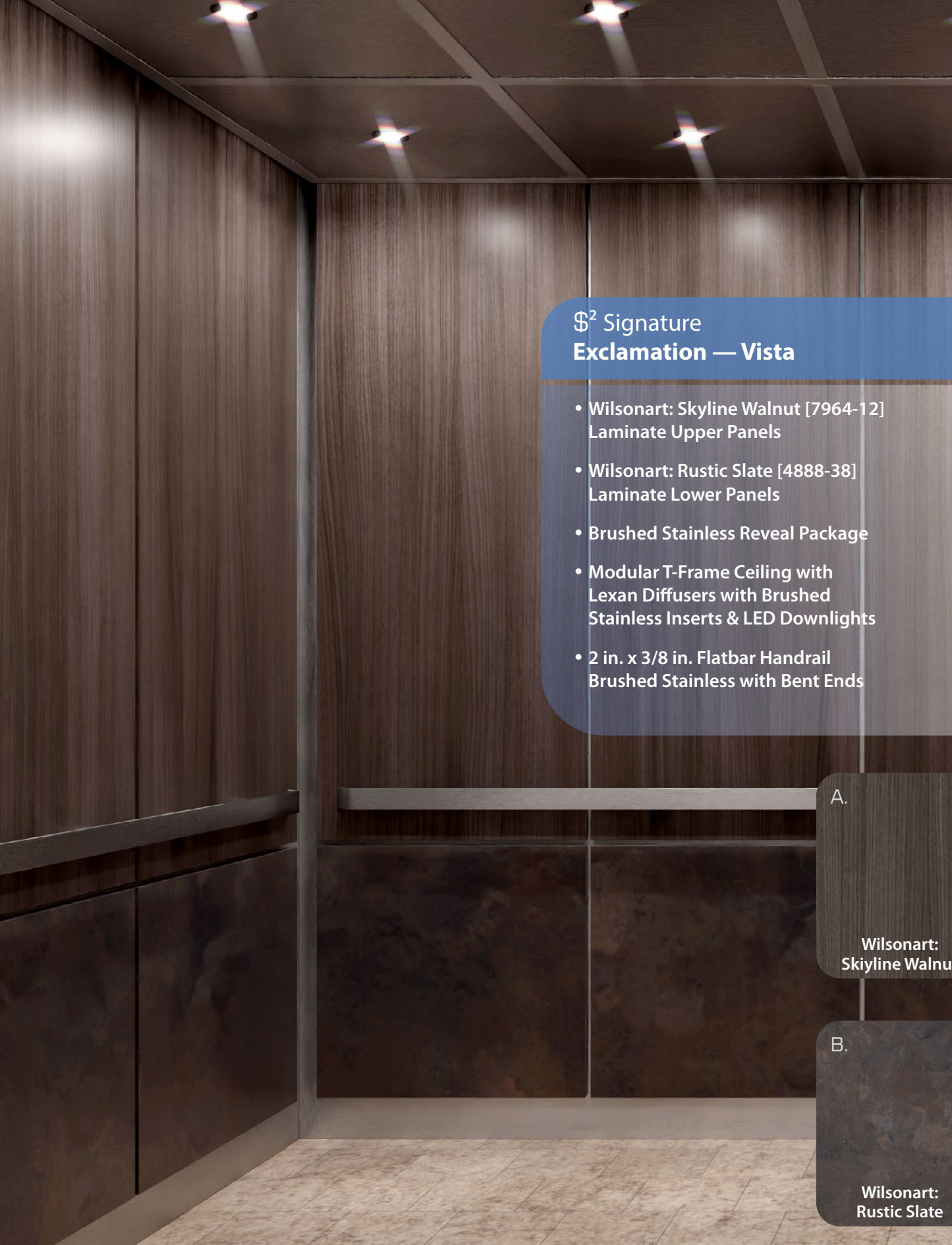
Scan the QR code to explore our online Cab-Builder and begin crafting your personalized 3D elevator design today at <https://lwielevator.com/cab-builder/>



**\$<sup>2</sup> Signature  
Executive — Elevate**

**2**

- **Wilsonart: Beigewood [7850-60]  
Laminate Upper and Lower Panels**
- **Brushed Stainless Reveal Package**
- **Modular T-Frame Ceiling with  
Brushed Stainless Inserts & LED  
Downlights**
- **2 in. x 3/8 in. Flatbar Handrail  
Brushed Stainless with Bent Ends  
Brushed Stainless with Straight Ends**



## \$<sup>2</sup> Signature Exclamation — Vista

- Wilsonart: Skyline Walnut [7964-12] Laminate Upper Panels
- Wilsonart: Rustic Slate [4888-38] Laminate Lower Panels
- Brushed Stainless Reveal Package
- Modular T-Frame Ceiling with Lexan Diffusers with Brushed Stainless Inserts & LED Downlights
- 2 in. x 3/8 in. Flatbar Handrail Brushed Stainless with Bent Ends

A.

Wilsonart:  
Skyline Walnut

B.

Wilsonart:  
Rustic Slate



## \$<sup>2</sup> SIGNATURE — OPTION 2 & 3

Cab interior configuration ideas



## \$<sup>2</sup> Signature Pinnacle — Lumina

- Formica: Travertine [3526-58]  
Laminate Upper Panels
- Rigidized Linen Textured Stainless  
Lower Panels
- Brushed Stainless Reveal Package
- Modular T-Frame Ceiling with  
Brushed Stainless Inserts & LED  
Downlights
- 2 in. x 3/8 in. Flatbar Handrail  
Brushed Stainless with Straight Ends

A.

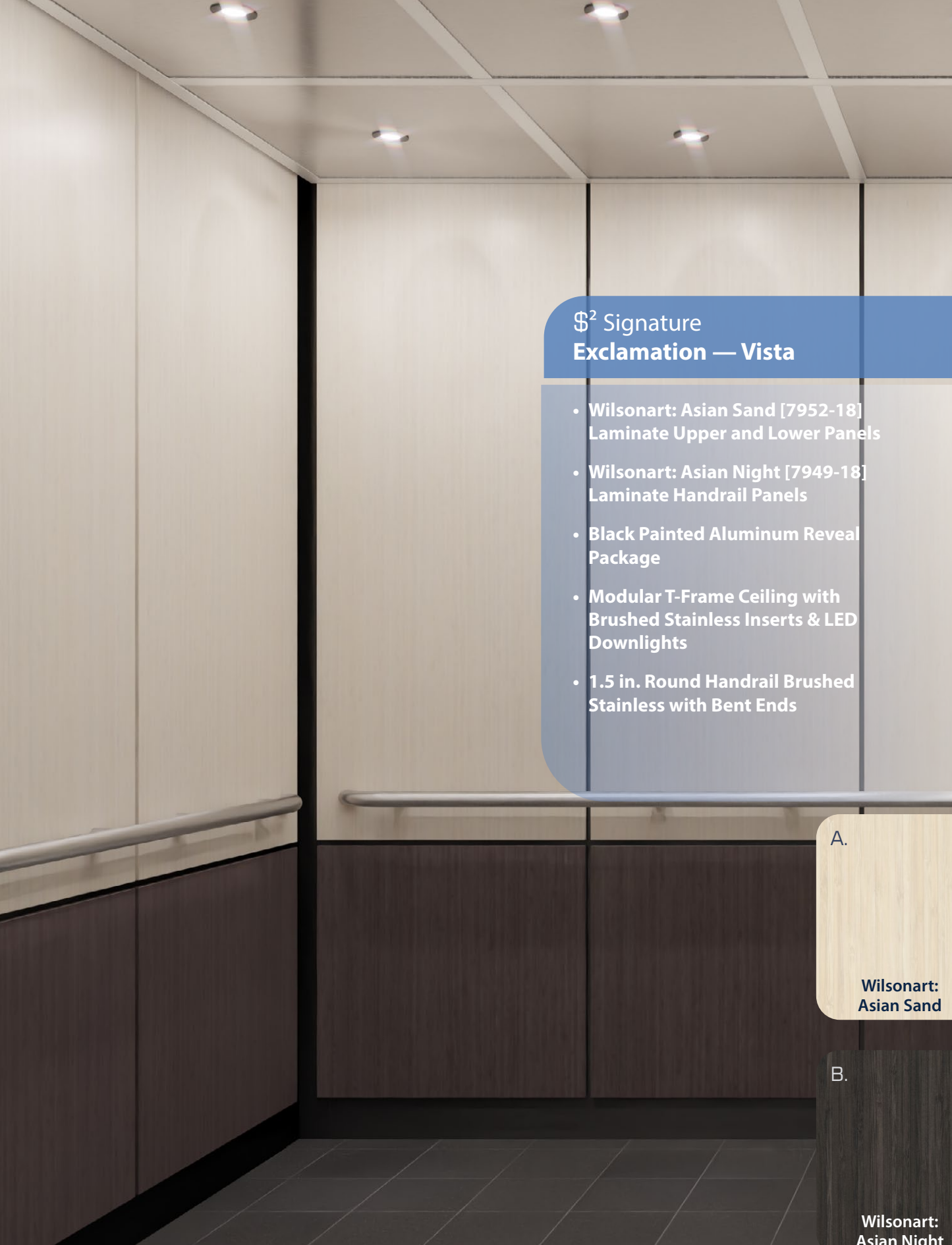
Formica:  
Travertine

B.

Rigidized:  
Linen Stainless

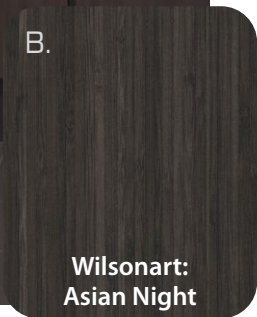
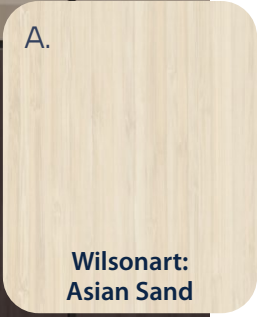
**Like one of these cabs?** Scan the QR code beneath your favorite to open it in our Cab-BUILDER and make it your own. Adjust materials, lighting, and details to create the interior that fits your project perfectly.





## \$<sup>2</sup> Signature Exclamation — Vista

- Wilsonart: Asian Sand [7952-18] Laminate Upper and Lower Panels
- Wilsonart: Asian Night [7949-18] Laminate Handrail Panels
- Black Painted Aluminum Reveal Package
- Modular T-Frame Ceiling with Brushed Stainless Inserts & LED Downlights
- 1.5 in. Round Handrail Brushed Stainless with Bent Ends



# \$<sup>2</sup> SIGNATURE — OPTION 4 & 5

Cab interior configuration ideas



## \$<sup>2</sup> Signature Renaissance — Harmony

- Wilsonart: Calcutta Marble [4925-07]  
Laminate Rear Wall Panels
- Formica: Black Bardiglio [5019-58]  
Laminate Side Wall Panels
- Brushed Stainless Reveal Package
- Island Ceiling with Brushed Stainless  
Grids & LED Downlights
- 1.5 in. Round Handrail Brushed  
Stainless with Straight Ends

A.

Wilsonart:  
Calcutta Marble

B.

Formica:  
Black Bardiglio

Like one of these cabs? Scan the QR code beneath your favorite to open it in our Cab-BUILDER and make it your own. Adjust materials, lighting, and details to create the interior that fits your project perfectly.





**\$<sup>2</sup> Signature**  
**Vertical Horizon — Aura**

- **Formica: Formal Walnut [5782-NG]**  
Laminate Upper Panels
- **Formica: Burnt Strand [6307-58]**  
Laminate Upper Panels
- **Rigidized 3SQ Textured Stainless**  
Lower Panels
- **Brushed Stainless Reveal Package**
- **Island Ceiling with Brushed Stainless**  
Grids & LED Downlights
- **2 in. x 3/8 in. Flatbar Handrail**  
Brushed Stainless with Bent Ends

A.

Formica:  
Formal Walnut

A.

Formica:  
Burnt Strand

B.

Rigidized:  
3SQ Stainless



**\$<sup>2</sup> SIGNATURE — OPTION 6 & 7**

Cab interior configuration ideas



## \$<sup>2</sup> Signature Legend — Drift

- **Wilsonart: Cherry PB Natural [8273-05]**  
Laminate Upper & Lower Panels
- **Wilsonart: Cherry PB Auburn [8276-05]**  
Laminate Handrail Panels
- **Brushed Stainless Reveal Package**
- **Modular T-Frame Ceiling with Brushed  
Stainless Inserts & LED Downlights**
- **2 in. x 3/8 in. Flatbar Handrail**  
Brushed Stainless with Bent Ends

A.

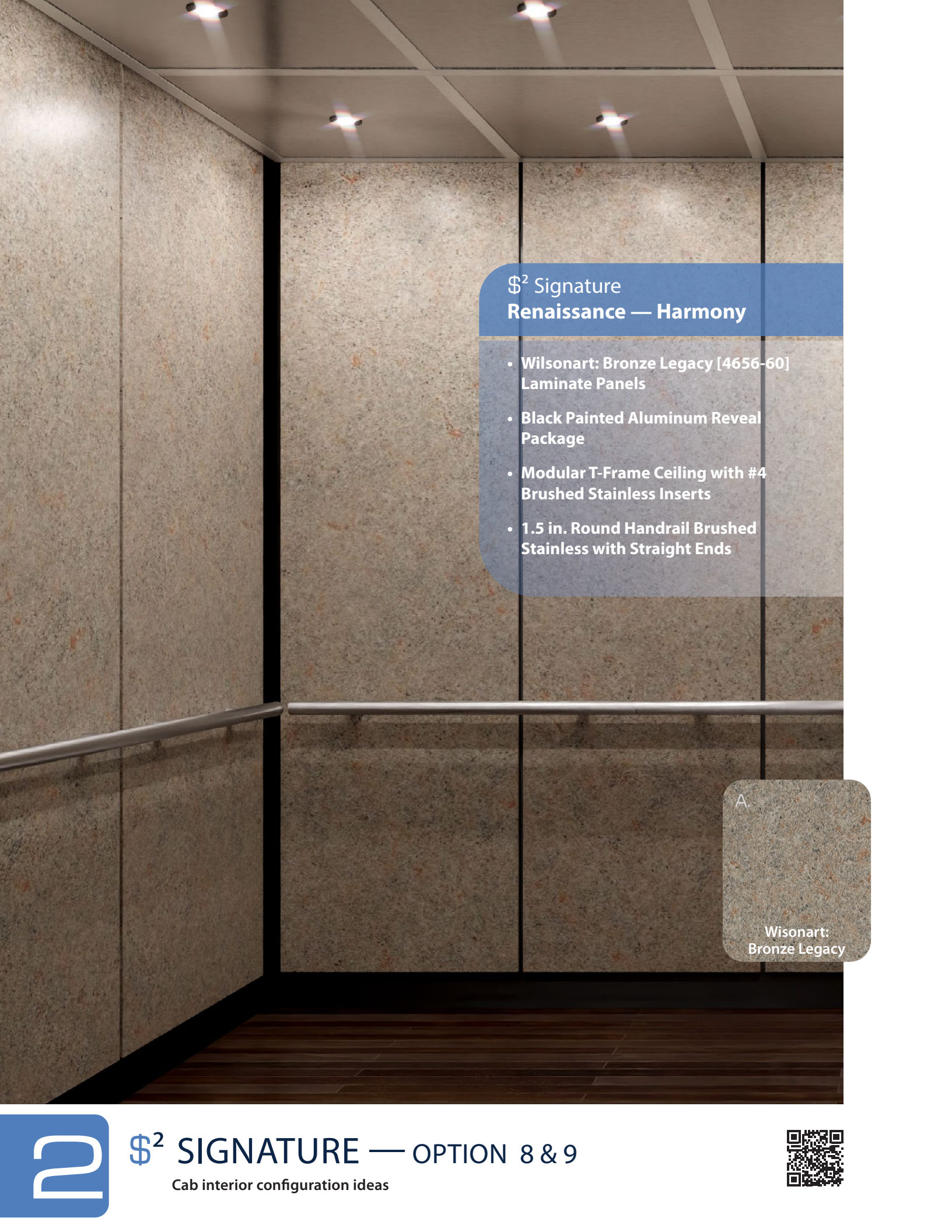
Wilsonart:  
Cherry PB Natural

B.

Wilsonart:  
Cherry PB Auburn

**Like one of these cabs?** Scan the QR code beneath your favorite to open it in our Cab-Builder and make it your own. Adjust materials, lighting, and details to create the interior that fits your project perfectly.





§<sup>2</sup> Signature  
Renaissance — Harmony

- Wilsonart: Bronze Legacy [4656-60] Laminate Panels
- Black Painted Aluminum Reveal Package
- Modular T-Frame Ceiling with #4 Brushed Stainless Inserts
- 1.5 in. Round Handrail Brushed Stainless with Straight Ends

A.

Wilsonart:  
Bronze Legacy



§<sup>2</sup> SIGNATURE — OPTION 8 & 9

Cab interior configuration ideas



## \$<sup>2</sup> Signature Vertical Horizon—Aura

- **Wilsonart: Ebony Recon [7997-38] Laminate Upper Panels**
- **Rigidized: 2FL Textured Stainless Lower Panels**
- **#4 Brushed Stainless Reveal Package**
- **Modular T-Frame Ceiling with Brushed Stainless Inserts & LED Downlights**
- **1.5 in. Round Handrail Brushed Stainless with Straight Ends**

A.

**Wilsonart:  
Ebony Recon**

B.

**Rigidized:  
2FL Stainless**

Like one of these cabs? Scan the QR code beneath your favorite to open it in our Cab-Builder and make it your own. Adjust materials, lighting, and details to create the interior that fits your project perfectly.



## \$<sup>3</sup> PREMIER — DESIGN, ATMOSPHERE, MOOD

Step into a world of elegance with [city name], our most sought-after interior throughout the years. It is also part of the EZ-Series and the featured Trend Capsule model. This elevator cab is crafted with vertical panels that stretch seamlessly from base to ceiling, this design exudes timeless sophistication. Inspired by Philadelphia's classic symmetry and historic detailing, [city name] pairs warm White Oak with dusty plum accents, refined textiles, and marble stone. The result is a cab that honors tradition while embracing modern simplicity — elevating every passenger's experience with heritage reborn.



### Bring your vision to life!

Like a design you see but want to customize it—start by scanning the QR code at the bottom of the layout you prefer. You'll jump directly into that cab's configuration and can tailor every detail from there. Explore your ideal interior with our fully customizable elevator cab packages, and connect with a sales representative to bring your vision to life.

Customize your elevator interior with a wide selection of materials, lighting, handrails, and ceiling panels — all designed to deliver superior comfort, style, and functionality.

Scan the QR code to explore our online Cab-Builder and begin crafting your personalized 3D elevator design today at <https://lwielevator.com/cab-builder/>



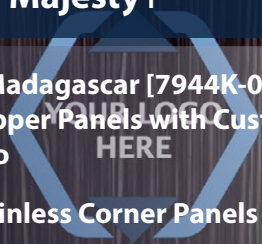
**\$<sup>3</sup> Premier  
Executive —Elevate**

**3**

- **Wilsonart: Beigewood [7850-60] Laminate Upper and Lower Panels**
- **Rigidized 5WL Textured Stainless**
- **#4 Brushed Stainless Reveal Package**
- **Island Ceiling with #4 Brushed Stainless Grids & LED Downlights**
- **2 in. x 3/8 in. Flatbar Handrail Brushed Stainless with Bent Ends**

## \$<sup>3</sup> Premier Majestic — Majesty+

- **Wilsonart: Madagascar [7944K-01] Laminate Upper Panels with Custom Printed Logo**
- **Brushed Stainless Corner Panels**
- **Rigidized: 1CS Textured Stainless Lower Panels**
- **Brushed Stainless Reveal Package**
- **Island Ceiling with Brushed Stainless Grids & LED Panel Lights**
- **2 in. x 3/8 in. Flatbar Handrail Brushed Stainless with Straight Ends**



A.

Wilsonart:  
Madagascar

B.

Brushed Stainless

C.

Rigidized:  
1CS Stainless



# \$<sup>3</sup> PREMIER

Cab interior configuration ideas



## \$<sup>3</sup> Premier Legend — Drift

- **Wilsonart: Neowalnut [7991-38] Laminate Upper Panels**
- **Wilsonart: Black [1595-60] Laminate Handrail Panels**
- **Rigidized: Sandtex Stainless Lower Panels**
- **Brushed Stainless Reveal Package**
- **Modular T-Frame Ceiling with Black Frame, Brushed Stainless Inserts & LED Downlights**
- **2 in. x 3/8 in. Flatbar Handrail Brushed Stainless with Bent Ends**

A.

Wilsonart:  
Asian Sand

B.

Wilsonart:  
Black

C.

Wilsonart:  
Asian Sand

Like one of these cabs? Scan the QR code beneath your favorite to open it in our Cab-Builder and make it your own. Adjust materials, lighting, and details to create the interior that fits your project perfectly.



## \$<sup>3</sup> Premier Matrix — Momentum+

- Formica: Folkstone Grafix [507-58] Laminate Upper
- Brushed Stainless Handrail & Top Frieze Panel
- Formica: Navy Grafix [7018-58] Lower Panels
- Brushed Stainless Reveal Package
- Island Ceiling with Formica Navy Grafix Laminate Grids & LED Downlights
- 1.5 in. Round Handrail Brushed Stainless with Bent Ends

A.

Formica:  
Folkstone Grafix

B.

Brushed Stainless

C.

Formica:  
Navy Grafix

# \$<sup>3</sup> PREMIER

Cab interior configuration ideas



## \$<sup>3</sup> Premier Legend — Drift

- **Wilsonart: Figured Mahogany [7040-78] Laminate Upper Panels**
- **Brushed Stainless Handrail & Center Panels**
- **Rigidized: 1HM Textured Stainless Lower Panels**
- **Brushed Stainless Reveal Package**
- **Island Ceiling with Brushed Stainless Grids & LED Downlights**
- **2 in. x 3/8 in. Flatbar Handrail Brushed Stainless with Bent Ends**

A.

Wilsonart:  
Figured Mahogany

B.

Brushed Stainless

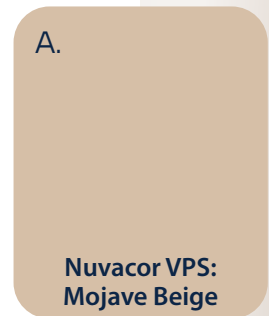
Rigidized:  
1HM Stainless

Like one of these cabs? Scan the QR code beneath your favorite to open it in our Cab-BUILDER and make it your own. Adjust materials, lighting, and details to create the interior that fits your project perfectly.



## \$<sup>4</sup> LUXURY — DESIGN, ATMOSPHERE, MOOD

Exquisite interiors transform the elevator into an experience. Sleek, expressive, and design-forward, they elevate atmosphere while maintaining practical performance. With resonant textures, layered richness, and bold finishes, Premier interiors are crafted to leave a lasting impression on every passenger.



### Bring your vision to life!

Like a design you see but want to customize it—start by scanning the QR code at the bottom of the layout you prefer. You'll jump directly into that cab's configuration and can tailor every detail from there. Explore your ideal interior with our fully customizable elevator cab packages, and connect with a sales representative to bring your vision to life.

Customize your elevator interior with a wide selection of materials, lighting, handrails, and ceiling panels — all designed to deliver superior comfort, style, and functionality.

Scan the QR code to explore our online Cab-Builder and begin crafting your personalized 3D elevator design today at <https://lwielevator.com/cab-builder/>



\$<sup>4</sup> Luxury  
Executive — Elevate

4

- NuvaCor VPS: Sierra Beige Polycarbonate Upper Panels with #4 Brushed Stainless U-Channel Edge Trim
- Gage Carve: Miami [C1001] in Champagne finish Lower Panels with #4 Brushed Stainless U-Channel Edge Trim
- Brushed Stainless Handrail Panels
- Brushed Stainless Reveal Package
- Island Ceiling with #4 Brushed Stainless Grids, LED Downlights & Perimeter Lighting System
- 2 in. x 3/8 in. Flatbar Handrail Brushed Stainless with Bent Ends

Wilsonart: White Oak  
Q1009-Grey-Lake

## \$<sup>4</sup> Luxury Legend — Drift+

- Nuvacor VPS: White Polycarbonate Upper with Brushed Aluminum U-Channel Edge Trim
- Wilsonart: Emerald Jewel [Y0739-60] Lower Panels with Brushed Aluminum Edge Trim
- Grey Tinted Mirror with Brushed Aluminum U-Channel Edge Trim
- Brushed Stainless Handrail Panels
- Brushed Stainless Reveal Package
- Island Ceiling with Brushed Stainless Grids & LED Downlights
- 2 in. x 3/8 in. Flatbar Handrail Brushed Stainless with Bent Ends

A.

Nudo: Nuvacor  
White

B.

Brushed Stainless


C.

Wilsonart:  
Emerald Jewel

\$<sup>4</sup> LUXURY

Cab interior configuration ideas





**\$<sup>4</sup> Luxury  
Executive — Elevate**

- **Wilsonart: Brighton Walnut [7922-07] Laminate Panels**
- **Moz Metals: Kelp Brushed Stainless Corner Panels**
- **Black Painted Aluminum Reveal Package**
- **Island Ceiling with Brushed Stainless Grids & LED Downlights**
- **1.5 in. Round Handrail Brushed Stainless with Vault Style Standoffs & Straight Ends**

A.


Wilsonart:  
Brighton Walnut

C.

Moz Metals:  
Kelp Stainless

**Like one of these cabs?** Scan the QR code beneath your favorite to open it in our Cab-BUILDER and make it your own. Adjust materials, lighting, and details to create the interior that fits your project perfectly.





**\$<sup>4</sup> Premier  
Matrix — Echo**

- **Wilsonart: Morelia Mango [7985-38]**  
Laminate Side Wall & Corner Panels
- **Keylanta: Italian Grey Travertine Faux Stone**  
Center Panels
- **Brushed Stainless Reveal Package**
- **Island Ceiling with Brushed Bronze Grids, LED Downlights**
- **2 in. x 3/8 in. Flatbar Handrail**  
Brushed Bronze with Bent Ends

A.

**Wilsonart:  
Morelia Mango**

B.

**Keylanta:  
Italian Grey  
Travertine**

**\$<sup>4</sup> LUXURY**

Cab interior configuration ideas



\$<sup>4</sup> Luxury  
**Majestic — Momentum+**

- **Wilsonart: Fawn Cypress [8208-16]**  
Laminate Flanking & Lower Panels
- **Antique Mirror Center & Upper Panels**  
with Brushed Aluminum Edge Trim
- **Brushed Stainless Reveal Package**
- **Island Ceiling with Brushed Stainless**  
Grids & LED Downlights
- **1.5 in. Round Handrail Brushed**  
Stainless with Bent Ends

A.

**Wilsonart:**  
**Fawn Cypress**

B.

**Antique Mirror**

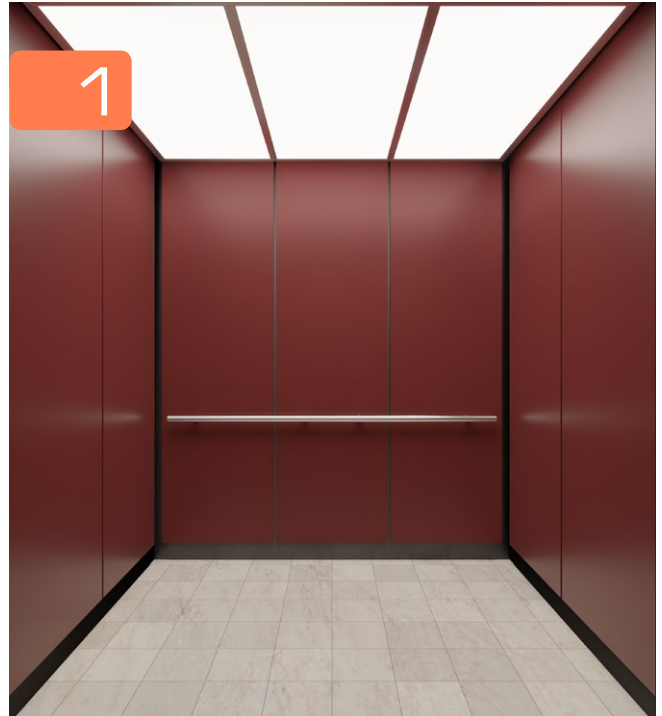
**Like one of these cabs?** Scan the QR code beneath your favorite to open it in our Cab-Builder and make it your own. Adjust materials, lighting, and details to create the interior that fits your project perfectly.



# OUR PROJECT GALLERY



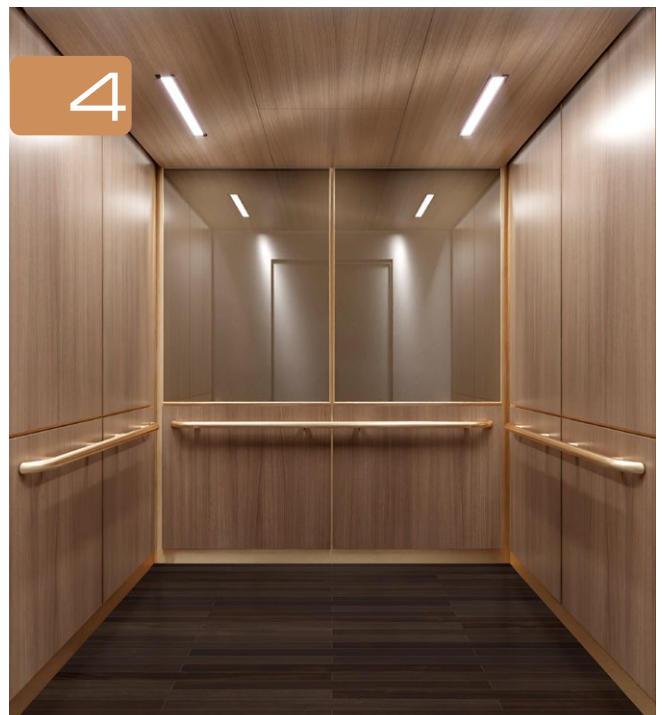
A customer favorite  
\$<sup>2</sup> Signiture



A customer favorite  
\$<sup>1</sup> CoreCab



A customer favorite  
\$<sup>2</sup> Signiture



A customer favorite  
\$<sup>4</sup> Luxury

Explore our curated interiors and use them as a starting point for your own design. Each layout showcases a complete, ready-to-spec cab from our CoreCab Signature, Luxury, and Premier collections—fully customizable to match your project's style, budget, and performance requirements.



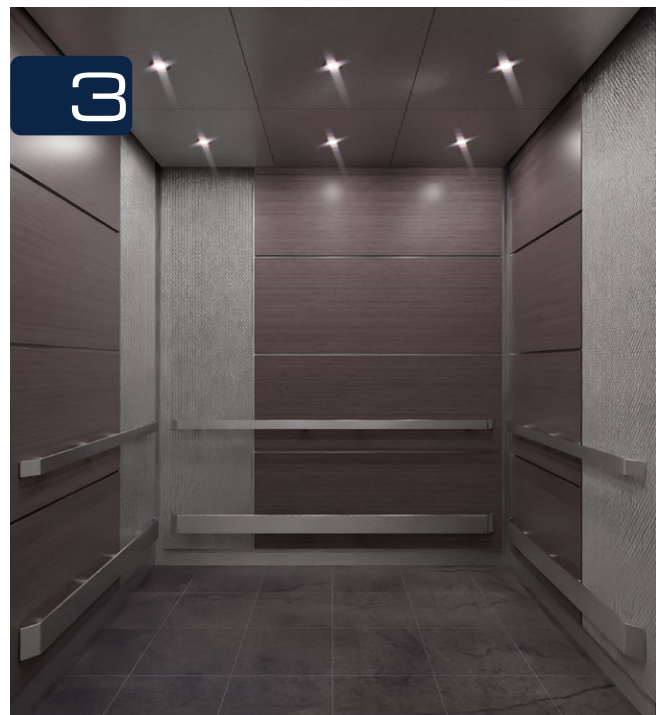
A customer favorite  
\$<sup>2</sup> Signature



A customer favorite  
\$<sup>3</sup> Premier

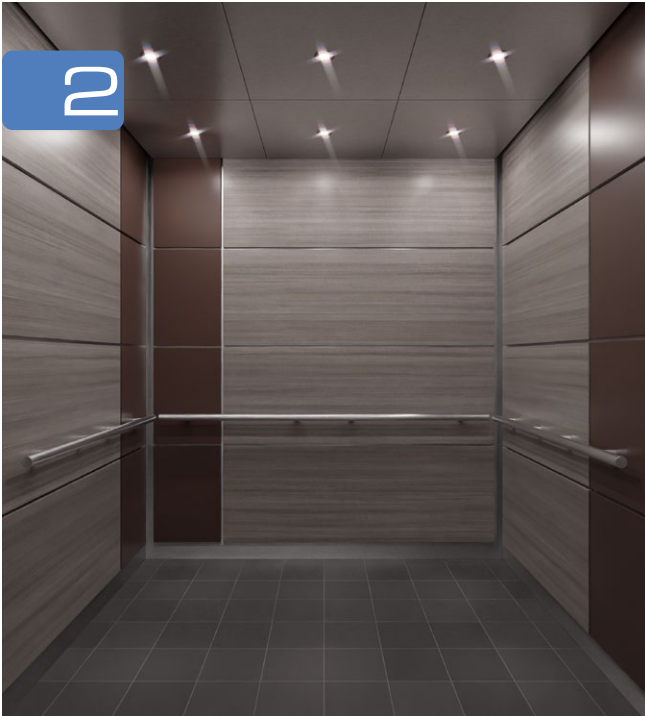


A customer favorite  
\$<sup>4</sup> Luxury

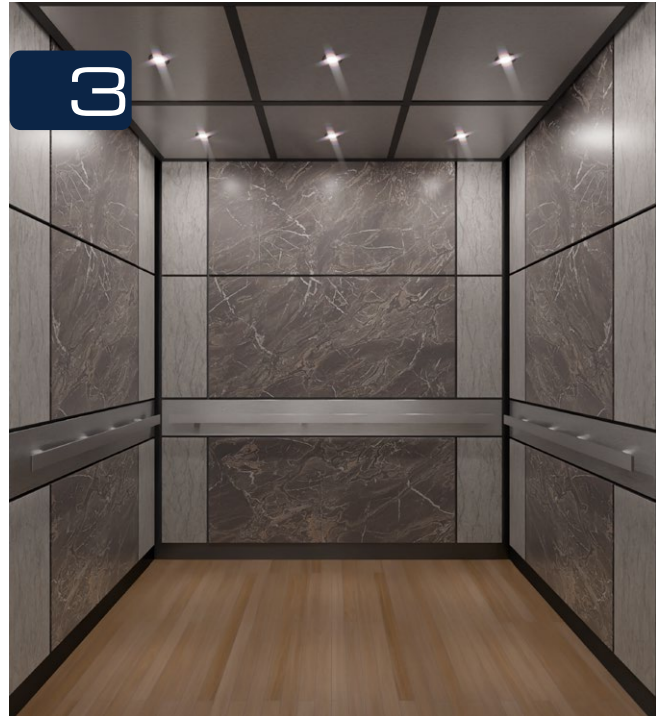


A customer favorite  
\$<sup>3</sup> Premier

# OUR PROJECT GALLERY



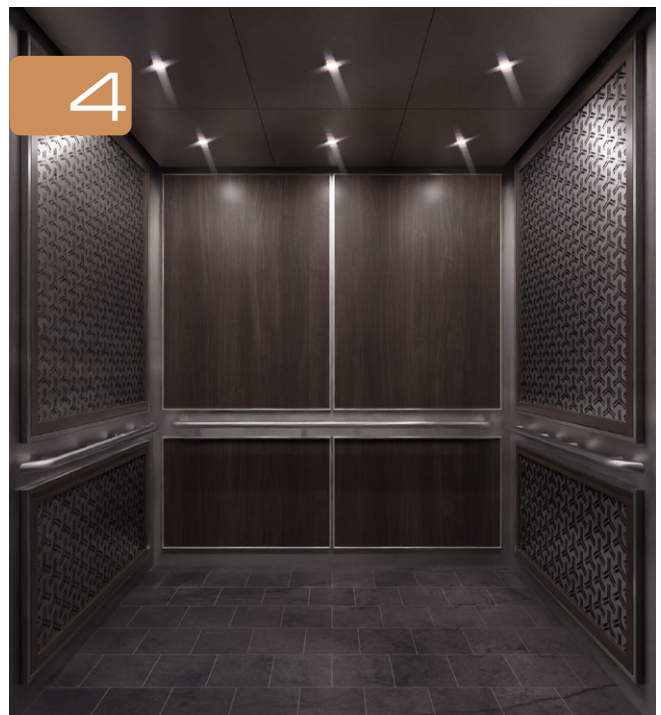
A customer favorite  
\$<sup>2</sup> Signiture



A customer favorite  
\$<sup>3</sup> Premier



A customer favorite  
\$<sup>3</sup> Premier



A customer favorite  
\$<sup>4</sup> Luxury

Explore our curated interiors and use them as a starting point for your own design. Each layout showcases a complete, ready-to-spec cab from our CoreCab Signature, Luxury, and Premier collections—fully customizable to match your project's style, budget, and performance requirements.



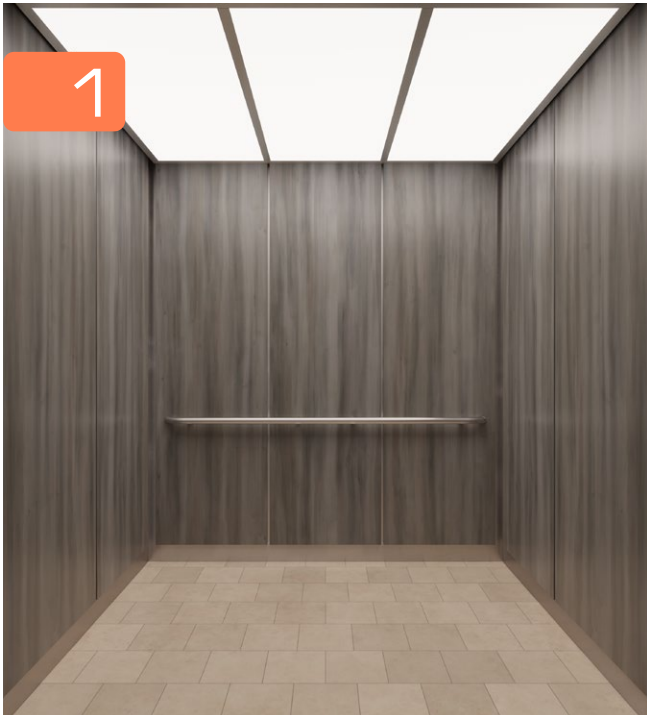
A customer favorite  
\$<sup>2</sup> Signature



A customer favorite  
\$<sup>4</sup> Luxury



A customer favorite  
\$<sup>2</sup> Signature

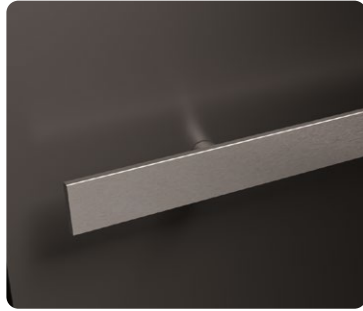


A customer favorite  
\$<sup>1</sup> CoreCab

# HANDRAIL & BUMPER OPTIONS



2" Flat Bar  
with Bent Ends



2" Flat Bar  
with Straight Ends



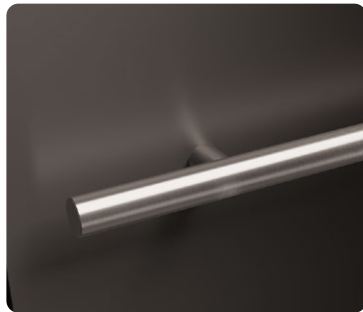
2" Flat Bar  
with Bent Ends



2" Flat Bar  
with Straight Ends



1.5" Round Bar  
with Bent Ends



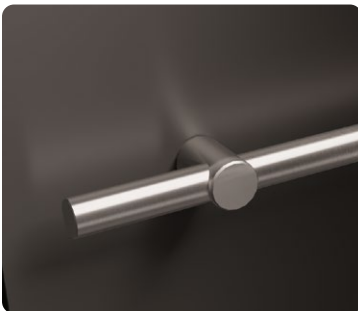
1.5" Round Bar  
with Straight Ends



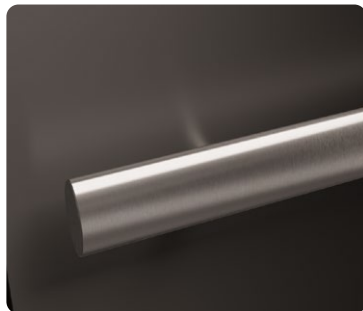
4" Flat Bar  
with Bent Ends



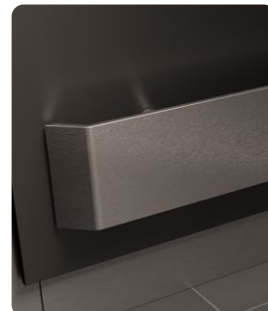
4" Flat Bar  
with Straight Ends



1.5" Round Bar  
w/ Vault Style Standoffs



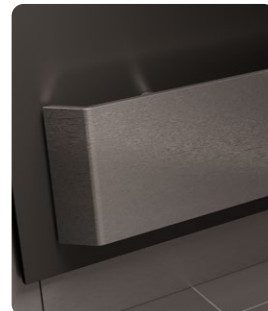
Oval Bar  
w/ Straight Ends



6" Flat Bar  
with Bent Ends



6" Flat Bar  
with Straight Ends



8" Flat Bar  
with Bent Ends

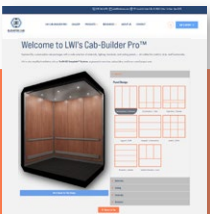


8" Flat Bar  
with Straight Ends



Our new catalog is still in the making, but there's plenty to explore. For a sneak peek, check out our cab packages and the models featured in the first edition of our Elevator Talk Newsbulletin.

Visit our webpage or LinkedIn for updates, product details, innovations or begin designing your cab!



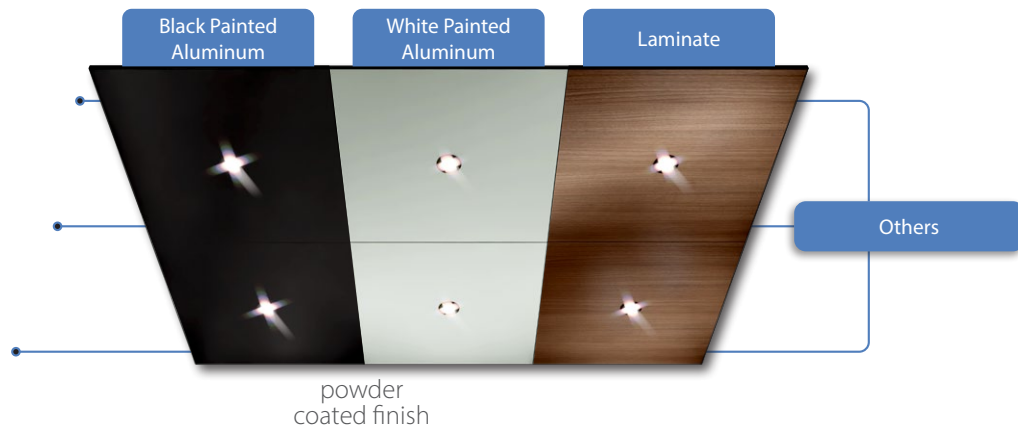
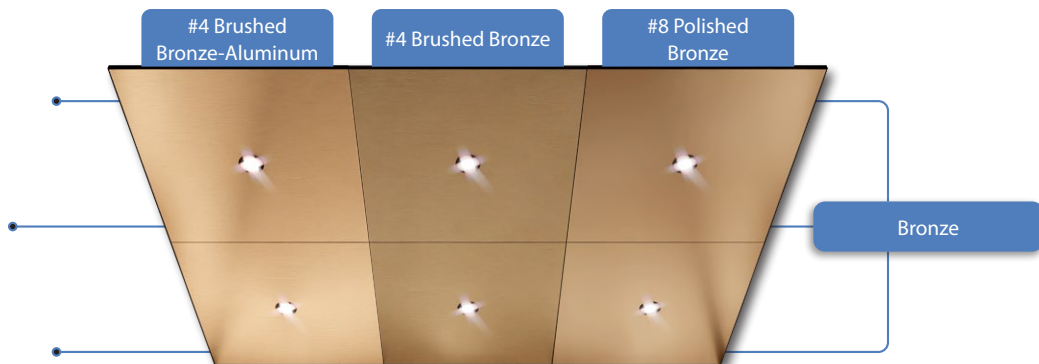
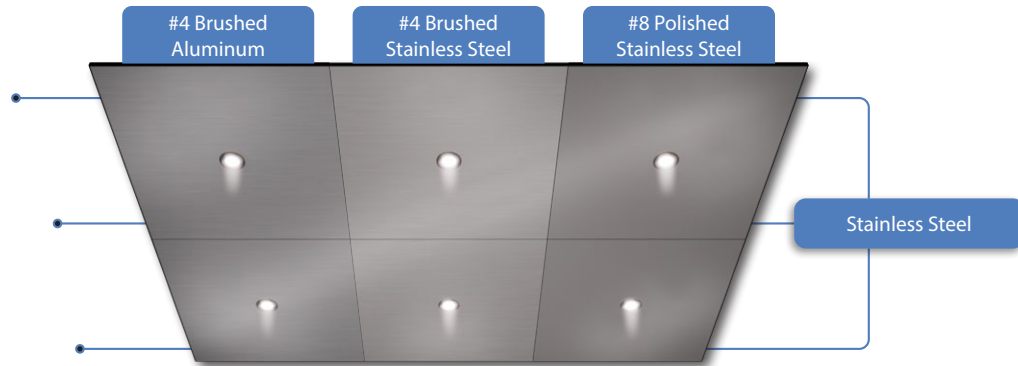
SCAN THE CODE &  
BRING VISON TO LIFE!

**NEED MORE INFORMATION OR WANT TO START A PROJECT?**

Drop our sales team an email at [sales@lwiweb.com](mailto:sales@lwiweb.com) or give us a call at **319-266-6598!**

Never miss an update—**follow us on LinkedIn.** 

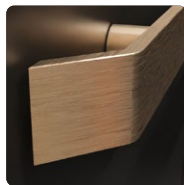
# ISLAND CEILING FINISH OPTIONS



## MATCH YOUR HAND RAIL & BUMPER FINISHES



Brushed Stainless



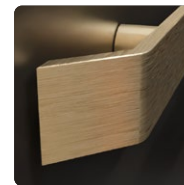
Brushed Bronze



Powder Coat



Polished Stainless

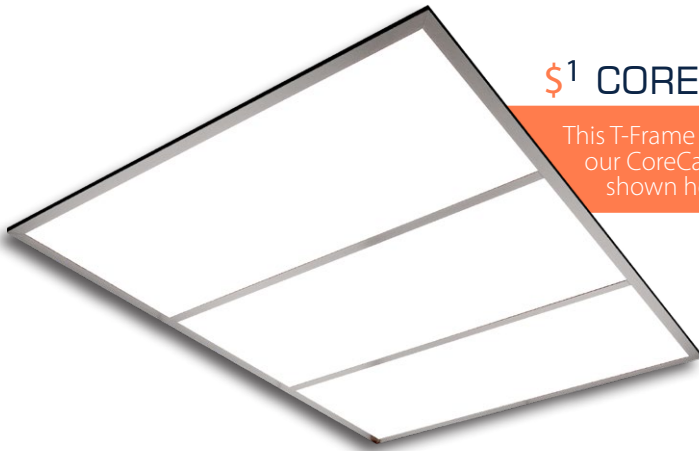


Brushed Brass



Painted Finish (Blue)

# ISLAND DOWNLIGHT CEILINGS



## \$<sup>1</sup> CORECAB

This T-Frame Ceiling is offered with our CoreCab Essential models, shown here in brushed aluminum.

### ALUMINUM T-FRAME CEILING\*

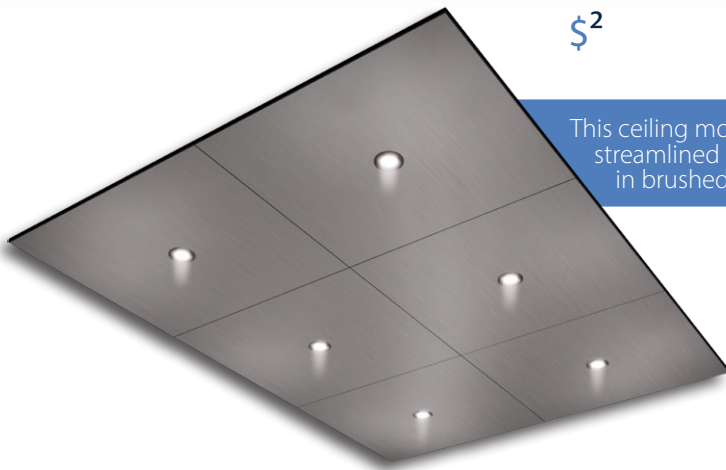
- Durable, Efficient, fully modular aluminum T-Frame ceiling system, available in a brushed aluminum or brass, or a black powder coated finish.
- Features impact-resistant twin-wall Lexan light diffuser paired with integrated LED strip lighting for clean, even illumination.



## \$<sup>2</sup>

### MODULAR, ALUMINUM T-FRAME CEILING\*

- Standard lighting includes 3" LED downlights with optional round or square bezels
- Modular T-Frame available in brushed aluminum, brushed bronze, or a black powder-coated finish



## \$<sup>2</sup>

This ceiling model is a timeless, streamlined ceiling—shown in brushed aluminum.

### CLASSIC ISLAND DOWNLIGHT\*

- Complete panel with a concealed frame for a clean, streamlined appearance
- Standard lighting includes 3" LED downlights with optional round or square bezels
- Lightweight core construction for easy installation and durability
- With a brushed stainless or brushed bronze finish

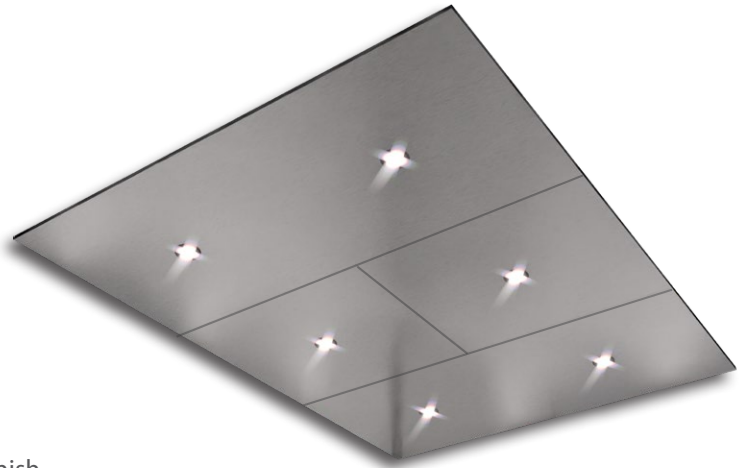
# ISLAND DOWNLIGHT CEILINGINGS



\$<sup>3</sup>

## MODULAR H-GRID ISLAND\*

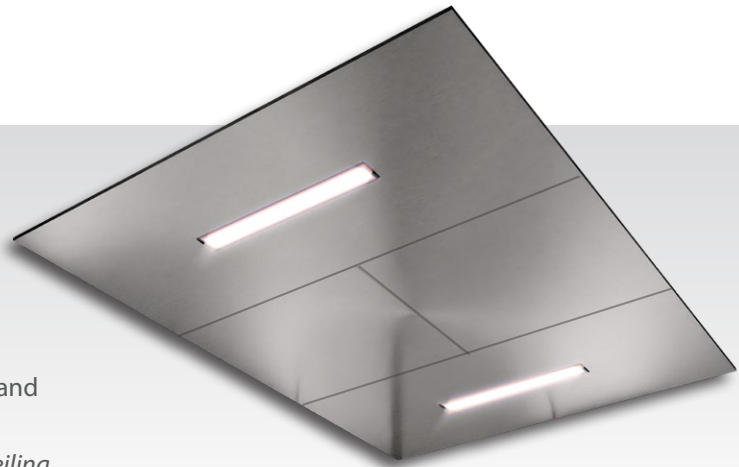
- Ultra-Lightweight core construction
- Standard lighting: 3" LED downlights
- - Round or Square Bezels
- With a brushed stainless or brushed bronze finish



\$<sup>4</sup>

## MODERN H-GRID ISLAND\*

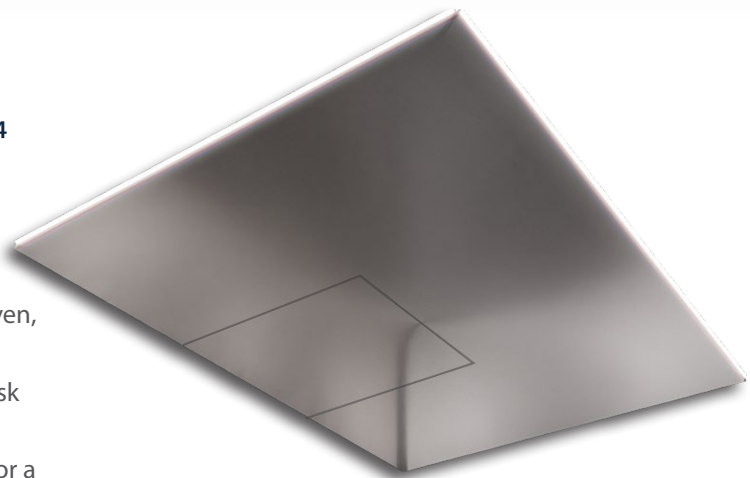
- Features two distinctive rectangular LED light panels that deliver a contemporary aesthetic and bright, even cab illumination
- Available in all finishes shown on the *Island Ceiling Finish Options* page



\$<sup>4</sup>

## SEEK PERIMETER-LIT ISLAND\*

- Integrated LED perimeter lighting provides even, shadow-free illumination
- Adjustable-angle lighting for customizable task visibility
- Precision hairline-seamed emergency hatch for a clean, seamless appearance
- Available in all finishes shown on the adjacent page



\* Our elevator cabs are typically equipped with Man-D-Tec lighting, and every ceiling we offer includes the option for integrated perimeter lighting.

# FIRE RATINGS

Material Tested	ASTM / Flame Class	Flame Spread (Sec.)	Smoke Development (Sec.)
<b>PANELS</b>			
Fire-Rated Flakeboard IPB substrate	E-84 - A	20	25
Fire-Rated Flakeboard IPB substrate with Wilsonart Plastic Laminate	E-84 - B	35	20
Fire-Rated Flakeboard IPB substrate with Formica Plastic Laminate	E-84 - B	60	55
Fire-Rated Flakeboard IPB substrate with Nevamar Plastic Laminate	E-84 - A	25	60
<b>CEILINGS</b>			
Komatex Expanded PVC <small>(Island Downlight Ceiling)</small>	E-84 - A	20	25
Twin Wall Polycarbonate Translucent Diffuser <small>(Economy T-Frame Ceilings)</small>	E-84 - A	0	85
<b>METALS</b>			
Stainless Steel, Aluminum, Bronze, & Other Metals <small>(Handrails, Bumper Rails, Panels, Ceilings, Reveals, &amp; Trim Pieces)</small>	Non-Combustible	N/A	N/A
<b>STONE</b>			
Stone Panels	Non-Combustible	N/A	N/A
<b>GLASS</b>			
Glass Panels	Non-Combustible	N/A	N/A

## UNITED STATES E-84 REQUIREMENTS


Class A: 0-25 sec. flame spread and 0-450 sec. smoke development


Class B: 26-75 sec. flame spread and 0-450 sec. smoke development

# APPROXIMATE PRODUCT WEIGHTS

Elevator Cab Size	WALL PANELS		CEILINGS			HANDRAILS	
	Panels	With TruFit EZ-Template™	T-Frame	Modular	Island	Rear Wall	All Walls
1500 lbs (Laminate 1/2" Core)	215 lbs	286 lbs					
1500 lbs (Laminate 3/4" Core)	305 lbs	376 lbs	16 lbs	67 lbs	74 lbs	10 lbs	30 lbs
1500 lbs (S.S. Pans 1/2" Core)	315 lbs	386 lbs					
2000 lbs (Laminate 1/2" Core)	230 lbs	306 lbs					
2000 lbs (Laminate 3/4" Core)	325 lbs	401 lbs	17 lbs	77 lbs	85 lbs	12 lbs	32 lbs
2000 lbs (S.S. Pans 1/2" Core)	335 lbs	411 lbs					
2500 lbs (Laminate 1/2" Core)	245 lbs	327 lbs					
2500 lbs (Laminate 3/4" Core)	355 lbs	437 lbs	18 lbs	90 lbs	100 lbs	15 lbs	35 lbs
2500 lbs (S.S. Pans 1/2" Core)	365 lbs	447 lbs					
3000 lbs (Laminate 1/2" Core)	265 lbs	352 lbs					
3000 lbs (Laminate 3/4" Core)	380 lbs	467 lbs	19 lbs	100 lbs	110 lbs	15 lbs	36 lbs
3000 lbs (S.S. Pans 1/2" Core)	390 lbs	477 lbs					
3500 lbs (Laminate 1/2" Core)	290 lbs	382 lbs					
3500 lbs (Laminate 3/4" Core)	415 lbs	507 lbs	20 lbs	110 lbs	120 lbs	15 lbs	40 lbs
3500 lbs (S.S. Pans 1/2" Core)	425 lbs	517 lbs					
4000 lbs (Laminate 1/2" Core)	355 lbs	452 lbs					
4000 lbs (Laminate 3/4" Core)	505 lbs	602 lbs	21 lbs	120 lbs	130 lbs	10 lbs	45 lbs
4000 lbs (S.S. Pans 1/2" Core)	515 lbs	612 lbs					
4500 lbs (Laminate 1/2" Core)	360 lbs	462 lbs					
4500 lbs (Laminate 3/4" Core)	515 lbs	617 lbs	22 lbs	130 lbs	140 lbs	12 lbs	48 lbs
4500 lbs (S.S. Pans 1/2" Core)	525 lbs	627 lbs					
5000 lbs (Laminate 1/2" Core)	385 lbs	492 lbs					
5000 lbs (Laminate 3/4" Core)	560 lbs	667 lbs	23 lbs	140 lbs	150 lbs	13 lbs	50 lbs
5000 lbs (S.S. Pans 1/2" Core)	570 lbs	677 lbs					



 1911 Lincoln Street  
Cedar Falls, Iowa 50613

 C 319-830-9126  
P 319-266-6598

 toddc@lwiweb.com  
www.lwielevator.com



**BRING YOUR VISION TO LIFE!**

Start crafting your customized  
elevator design today!

Link: <https://lwielevator.com/cab-builder/>